



# Zurn One Sensor Urinal System with 0.125 GPF EcoVantage® Hydro•X® Power Sensor Flush Valve Z.UR1.S.HYD

TAG \_\_\_\_\_

## ARCHITECTURAL & ENGINEERING SPECIFICATION

Complete EcoVantage® high efficiency 0.125 gpf sensor actuated, hydro-powered, wall mounted commercial urinal system with Z5755-U Omni-Flo top spud urinal, ZER6003AV-ULF-HYD exposed, sensor activated with manual override button chrome-plated closet diaphragm flushometer for either left or right hand supply manufactured by Zurn.

## PRODUCT FEATURES

- 0.125 gpf (gallons per flush)
- Wall mounted extended rim top spud urinal
- High efficiency siphon washout flush action
- Integral trap
- Vitreous china wall urinal construction
- Gear-operated flush valve with hydro-powered operation
- Heavy-duty construction body with a highly polished chrome-plated finish
- Triple filtered AquaVantage® diaphragm, gaskets and seals are made of chemical-resistant thermoplastic elastomer
- High pressure vacuum breaker
- Adjustable tailpiece
- True mechanical override button
- Control stop with internal siphon-guard protection, vandal-resistant stop cap, sweat solder kit, cast wall flange with set screw
- Asymmetric backwall for reduced splash back
- Oversized footprint to make retrofit easy
- Vandal resistant outlet strainer included
- 88% water savings over standard 1.0 gpf system

## COMPLIANCE AND CERTIFICATION:

Meets the American Disabilities Guidelines and ANSI A117.1 requirements when installed according to these requirements.

- Fixture - Complies with ASME A119.2 / CSA B45.1
- Flush Valve - Complies with ASSE 1037 / ASME A112.1037 / CSA B125.37



This product should be used with a WaterSense labeled counterpart with a compatible flush volume to ensure that the entire system meets the requirements for water efficiency and performance.



## ZURN ONE SYSTEM PACKOUT INCLUDES:

### FIXTURE - Z5755-U:

0.125 gpf [0.5 lpf] to 1.0 gpf [3.8 lpf] vitreous china, wall hung, integral trap, washdown urinal complete with 3/4" [19mm] top spud connection, concealed universal retrofit wall bracket, 2" [51mm] outlet connection and vandal resistant outlet strainer

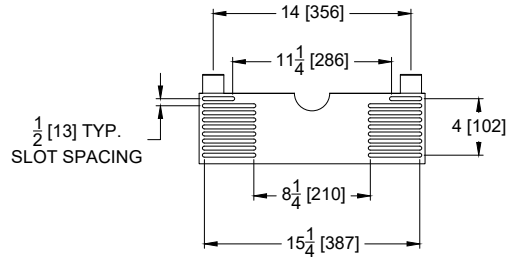
### FLUSH VALVE - ZER6003AV-ULF-HYD:

Zurn Hydro•X® Power series of sensor flush valves for urinals are designed for reliable, hands-free operation that lasts the life expectancy of a commercial restroom. This hydro-powered sensor flush valve for urinals requires no hard wiring or battery replacement, which means lower installation and maintenance costs. The gear-operated flush valve features a clog-resistant, triple filtered diaphragm. It is sensor activated to support a more hygienic environment by eliminating touch points. Pair with Hydro•X® Power faucets to maximize sustainable restroom goals

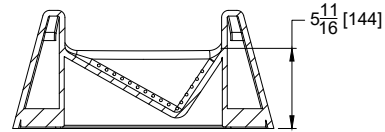
## ARCHITECTURAL & ENGINEERING APPROVAL

The information contained in this document is subject to change without notice.  
Please contact Zurn for most up to date information.

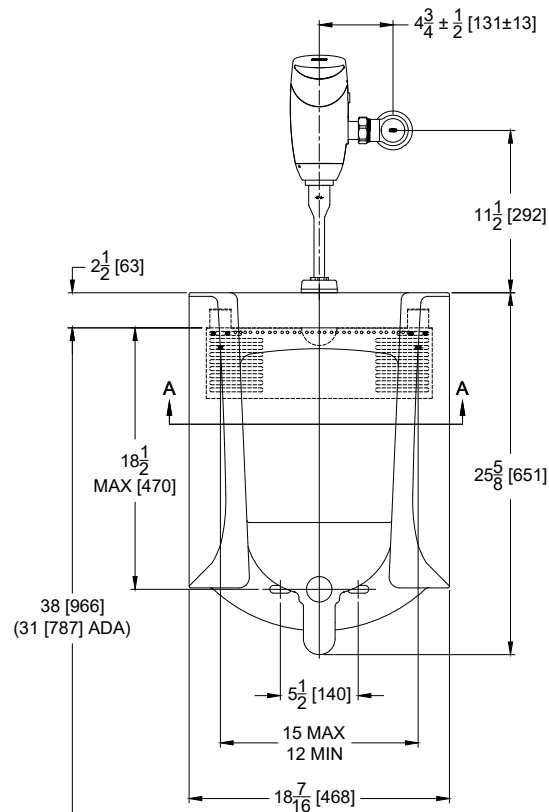
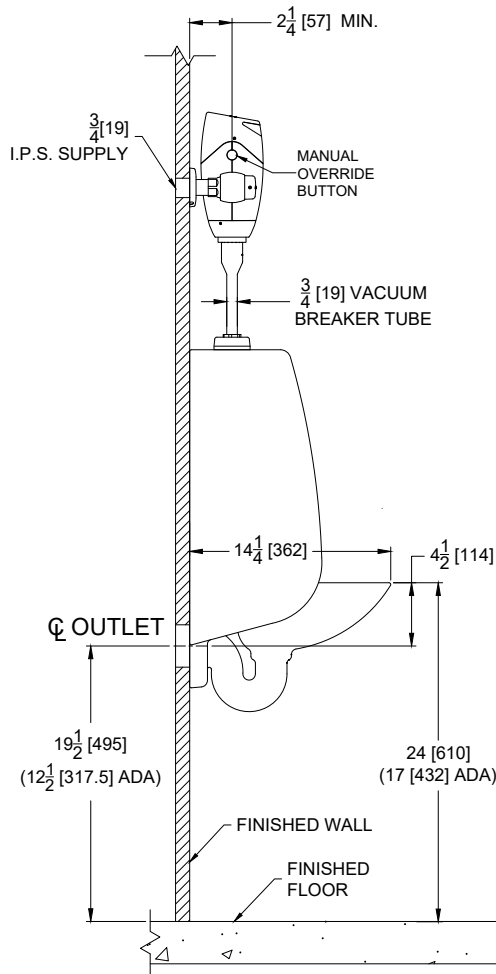
## Rough-in/Overview dimensions



UNIVERSAL RETROFIT  
BRACKET (UB)



SECTION A-A



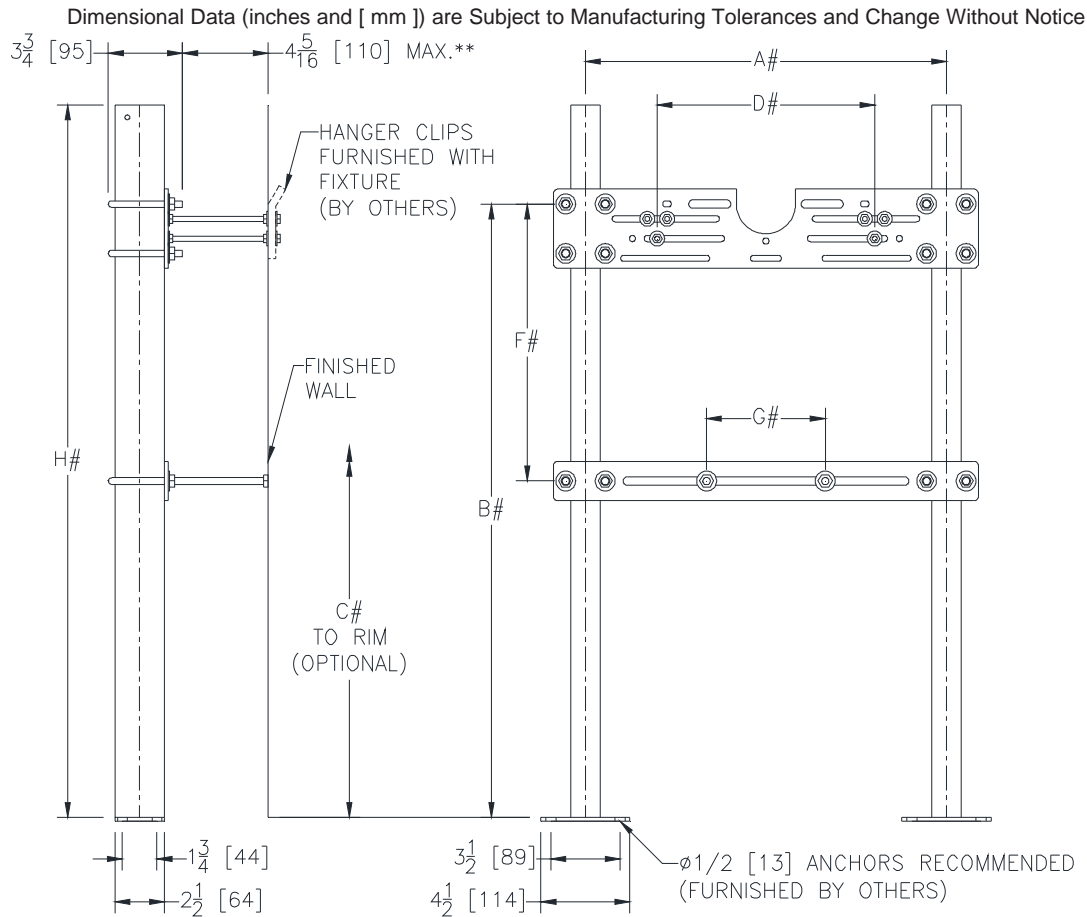


# Z1222

## PLATE TYPE SYSTEM WITH BEARING PLATE

SPECIFICATION SHEET

TAG \_\_\_\_\_



\*\*WITH STANDARD STUD LENGTH OF 6 [152]  
# REFER TO ROUGH-IN GUIDE OF SPECIFIC FIXTURE FOR DIMENSION

Product No.	Approx. Wt. Lbs. [kg]
Z1222	30 [14]

### ENGINEERING SPECIFICATION: ZURN Z1222

Wall urinal support system complete with Dura-Coated carbon structural steel rectangular tubing uprights, conforming to ASTM A500 Grade C, with welded base feet having slotted floor anchor holes. Lower bearing plate is vertically adjustable with slot to accommodate bearing jack placement. Upper universal hanger plate is pre-notched for back spud inlet and is designed for various hardware positions and fixtures. Includes mounting fasteners and hardware. Carrier system exceeds load and deflection requirements as outlined in ASME Standard A112.6.1M.

### OPTIONS (Check/specify appropriate options)

#### PREFIXES

\_\_\_ Z Dura-Coated System with Universal Plate\*

#### SUFFIXES

\_\_\_ -EZ Easy to Install Assembly (Uprights, bearing plate, and hanger plate are factory assembled)  
\_\_\_ -UA Urinal Adapter  
\_\_\_ -58 Flush Valve Supply Support

\* Regularly furnished unless otherwise specified.

Zurn Industries, LLC | Specification Drainage Operation  
1801 Pittsburgh Avenue, Erie, PA U.S.A. 16502 · Ph. 855-663-9876, Fax 814-454-7929  
In Canada | Zurn Industries Limited  
3544 Nashua Drive, Mississauga, Ontario L4V 1L2 · Ph. 905-405-8272, Fax 905-405-1292  
[www.zurn.com](http://www.zurn.com)

Rev. G  
Date: 09/27/2017  
C.N. No. 137976  
Prod. | Dwg. No. Z1222